



DS Flexhal

– Part of GOLDBECK –

Royal Unibrew A/S, Faxe



In progress



Project
Warehouse



Construction costs
Confidential



Landscape architect
Confidential



Client
Royal Unibrew A/S



Construction period
August 2023
to May 2025



Engineer
Confidential



Developed area
4.800 m²



Architect
Confidential



Turnkey Contractor
DS Flexhal A/S



New two-story warehouse expansion for Royal Unibrew A/S

DS Flexhal is currently in the process of constructing a new building for Royal Unibrew A/S in Faxe. It involves an

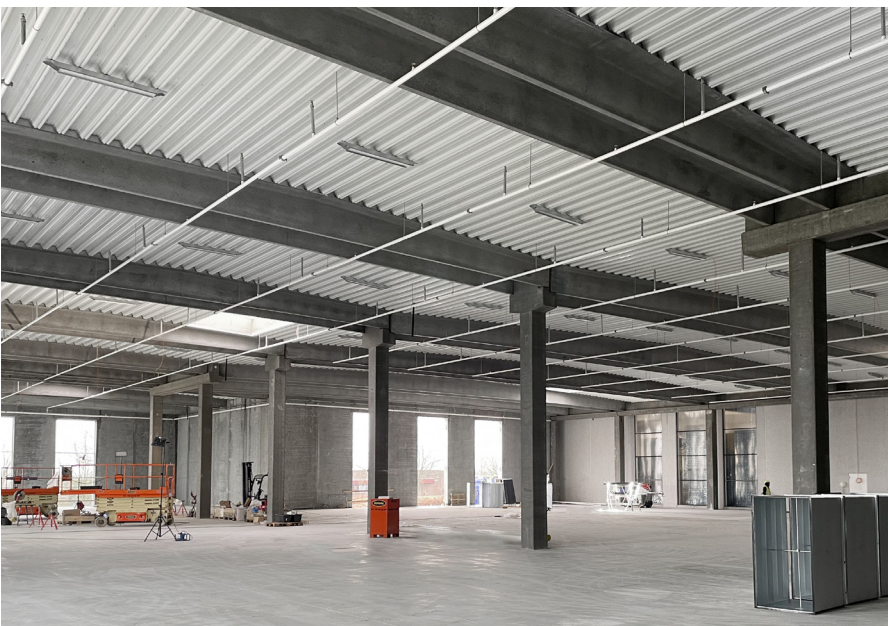
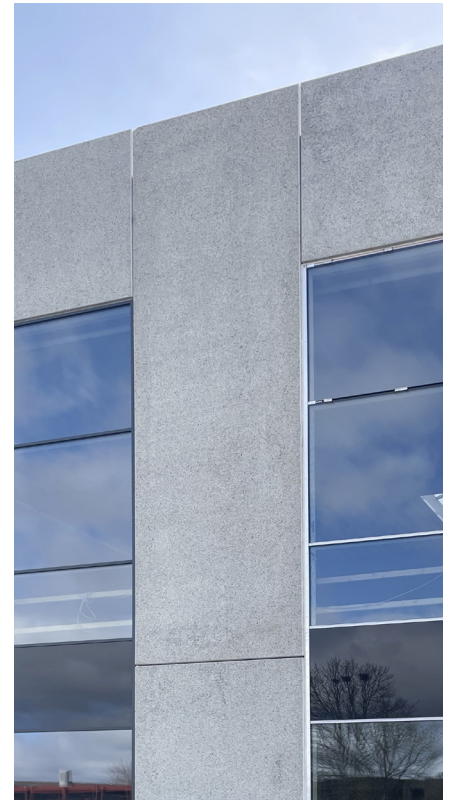
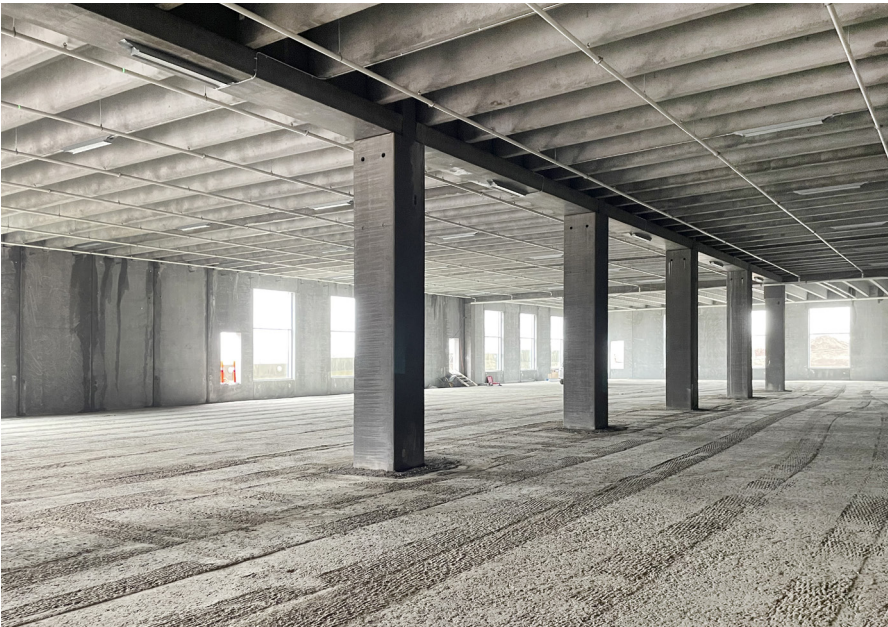
extension to their existing raw material warehouse. The extension spans two levels with a total floor area of approximately 4,800 square meters. DS Flexhal is the turnkey contractor of the project, responsible for both design and execution. Our sister company, DS Elcobyg, is responsible for delivering the facade elements for the warehouse building.

Royal Unibrew is a leading regional beverage company, primarily operating in

the Scandinavian countries, the Baltic states, Italy, France, and Canada. However, their products are sold globally in over 70 countries.

Ready for use by May 2024

In the beginning of March DS Flexhal closed the roof and the facade of the building. The construction is expected to be completed in May 2024 where Royal Unibrew can put their new warehouse extension to use.



DS Flexhal A/S

Samsøvej 2 · DK-9500 Hobro

CVR no.: 41416998

Phone +45 96 57 27 27

ds@ds-flexhal.dk

www.ds-flexhal.dk